



Cooper Center's Volcano Community News



NEWSLETTER #408

SEPTEMBER 2023

All newsletter submissions MUST be in by the 10th of the month. Ads placed must provide us with snail mail addresses or ad will not be placed. This Volcano Community News, published by Cooper Center Council, will reinstitute the requirement that ALL submission must be in a digital format. We will not digitize a hand written submission for anyone. If you can't do it, find someone to help you.

OKTOBERFEST IN VOLCANO

Friday, Oct. 6, 2023 4 - 7 pm at Cooper Center

That time of year is quickly approaching.....no not Christmas, but Oktoberfest at Cooper Center, so hold the date and plan on being there, as the food will be great and the beer will flow and don't forget to bring your Cooper Center beer mug for a \$1.00 off keg beer. October 6th 4 to 7 pm. Don't think I can find an oompah band but we certainly will try. Be assured, however, we will have music for your enjoyment.

We have a great German menu planned, so come with your appetite to enjoy fresh pretzels and a cheese dip to go with your beer, but save room for our main meal of: Beer stew, German potato salad, brats, with a bun if you'd like one, garlic beans, and of course sauerkraut, top it all off with apple cobbler with whipped cream. Our basic meal will be \$14.00.

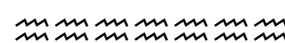
We will have signs directing you to get in line for the food, and improve the flow to get your meal to improve on our last event. So please come and enjoy Oktoberfest at your Community Center... Volcano style.

See you all at Oktoberfest!

Cooper Center Officers, Council and all our great volunteers.



"VCA Hosting Worm Composting Workshop: Cooper Center Pavilion Sept. 23 @ 1:30. See page 7 for more information."



Cooper Center Community Pantry News

The next drive through food pantry is on Wednesday, September 27th from 9:30-11:00am. We could use canned tuna and vegetable donations.

Contact Victoria:
ccccommunitypantry@gmail.com

Let the pretzels and beer (& wine & sodas) flow!

Volcano Newsletter News Submissions

All submissions must be by email, ads, articles, and unclassifieds to Linda Ugalde kilaueatutu@gmail.com, on or before the 10th of the month prior to month it's being submitted for. All ads must also give us their snail mail address for invoicing. Articles for non regular submissions may not be over 300 words. For additional information email me or call 808-936-9705. No calls after 5pm.

Volcano Community News (VCN) is not responsible for errors in submitted articles, that is the responsibility of the submitter.

Advertising

Ads: 1½" x 2½" \$30.00 per issue, with 6 month pre-payment 10% reduction (\$162) in unchanged ad. For 2½" square ads it's \$45.00 per month. For 6 months 10% reduction (\$243). Back page is \$55 and \$75 same terms. Ads are placed as submitted. It is not our job to change or fix an ad. Must be submitted in the size requested. Minimum resolution for ads is 300 dpi. Ad and payment must be received by the 10th. Clearly state if ad is being run for 1 month or if it's going to be longer. Again payment must be made by the 10th or ad will be pulled.

Checks for ads should be made out to **Cooper Center Council**, and mailed to:

P.O. Box 1000
Volcano, HI 96785,

and identify ad that's being paid for.

The "Voice" on pages 6 & 7 is produced with full editorial license by Volcano Community Association, not Cooper Center Council.

Editor: Linda L. Ugalde
Layout & Design by
Kipuka Graphics

UNCLASSIFIEDS

Broken Zipper? Let me fix it for you. My favorite jeans jacket had a broken zipper so instead of ditching it I learned how to fix it. Charge only for materials used. Call Sher at 808-967-8553 or email kipuka22@yahoo.com.

I'm looking for some 1 ½ - 2 ft. **long lava rocks** for my rock & flower garden and a few **Hapuu Ferns**. Does anyone have any number of these they're interested in getting rid of or to trade for some 30-40 ft. bamboo stalks that I've cut down? Please let me know if you do. Mahalo, Bob (808) 985-9078"



**ELECTRONICS
RECYCLING
COLLECTION**

Mr. K's Recycle & Redemption
815 Kino'ole St, Hilo
Free - Daily 10:00 a.m. to 3:00 p.m.

Businesses, government agencies and
non-profit organizations on weekdays by
appointment only

To schedule an appointment, call 808-
969-1222

For more info visit
www.mrksrecyclehawaii.com/electronic-waste.html

Computers, monitors, printers, TVs are accepted.
For full list visit website.

State of Hawai'i Electronic Device Recycling & Recovery
Law <https://health.hawaii.gov/ewaste/>



**Direct Mail
to over 1300
Volcano Households**

**YOUR
AD
HERE!**

kilaueatutu@gmail.com

Worship Services & Meditation Groups

Catholic Sunday Mass
St. Theresa's in Mt. View
5:30 pm on Saturday
10:00 am on Sunday

New Hope Christian Fellowship
Hilo Side of Akatsuka Orchids
Sunday Svc. 8:30am
Pastor Ray Glory, Jr.
Pastor Jason Morton
newhopevolcano.com

The Village Church
Sunday Service at 10 am
Wednesday Bible Study 6:30 pm
19-4276 Wright Rd
Volcano, HI 96785
email: tvcvolcano@gmail.com

Society of Friends (Quakers)
Royal Hawaiian Estates
Every Sunday at 2 pm
new phone # 808-443-9202

The Baha'i Faith / Mauna Loa Est.
6-7 pm Tuesdays
All are welcome! 551-6329

The Unitarian-Universalists of Puna
10:30 am Sundays in HPP
Call: 967-7295 for a ride.

Hale Lokahi Retreat House
Mini Retreat every Sunday
10:30 am on Zoom
Call 808-896-7234

Volcano Insight Meditation Group
Mary Grace Orr, teacher
10 AM Sundays, on Zoom
Monthly in person at VAC
for info and link, email:
mgrace.orr@gmail.com

Family of Faith
Church of the Nazarene
18-1325 Old Volcano Rd - Mt View
Sunday Worship @ 9 am
(808) 491-8413

Rainfall in Inches for the Month of July 2023

Volcano Golf Course 5.57
data collected by Janis Hamersma

Volcano Village 7.86
data collected by Jim Bush

Mauna Loa Est. 9.00
data collected by JJ Jasinski

Royal Hawn Est. 9.52
data collected by Tom Pico

Fern Forest 10.31
data collected by Drew Kapp

Ohia Estates 7.97
data collected by Phil Haysmer

House Sitting

Jim and Laura Buck
808-753-1260
We love pets & plants!
References available.



Volcano Gravel

small • medium load delivery.
gravel, cinder, soil, sand, etc. • pest-free
replenish your driveway • excavation available
808-381-8876 • gyamanoha@yahoo.com

CAFÉ ONO

"Enjoy Lunch in our Historic Garden"



Open: Thur • Fri • Sat • Sun from 11am till 2pm
19-3834 Old Volcano Road
808 • 985 • 8979 www.cafeono.net

Volcano's Handy Guy

Phillip specializes
in the maintenance of water systems.
He sells water pumps and Ultraviolet water
purifiers. He worked as a Sears appliance repairman
and repairs washers, dryers, dishwashers, garbage
disposals, etc. He has been doing home repairs
in Volcano since 1992.
Call him at 967-7100

Kilauea Nails

Manicures • Pedicures • Gelish • Facial
Waxing • Gift Cert • Specializing
in Chronic Nail Conditions
By Appointment Only
808-937-4833



Volcano Seniors September 2023 Calendar

Sept 7- Cook out At Carl-
smith Beach park, Games,
Potluck

Sept 14- Business Mtg,
Games, potluck

Sept 21 - Games, potluck

Sept 28 - Bingo, Potluck,
Games

The Volcano Senior's Club
meets every Thursday
morning at Cooper Center
from 9-12.

Allan Kroll

Realtor & Notary Public
808-756-3010
Savio Realty, Ltd.
Over 1,000 Properties Sold...
Volcano resident since 1982
allank3@gmail.com
hawaiiproperty.tv - website
RB-16443

Aunty Pon's Thai Food Truck



at Cooper Center: Mon-Thur + Sat
11:30am - 6:00pm
call in order: 808-785-5795
www.auntyponsthaifoodtruck.com

Kamano Arts
Hawaii Wood Art & Crafts
PO Box 2129
Volcano, Hi. 96785
Kamanoarts@aol.com
808-968-8822

Kilauea PC Mobile Computer Services

On site computer solutions
and support for your business,
home, or home office.
PC Diagnostics and repair
Computer Networking Services
Consultations and Upgrades

Michael Boucher: 808 896 0060
mike@kilaueapc.com

Windows XP/Vista/7/8/10 Server 2003/2008/2012 Microsoft Exchange Server



Kipuka Graphics

certified graphic design
at an affordable price

Sher Glass
808-967-8553
www.kipukagraphics.com

Pulled Pork, Chili and More



It's been a busy summer for our Rotary Club of Volcano cooks. First, there was the effort to serve out traditional pulled-pork sandwiches at the Fourth of July celebration at the Cooper Center. Our chefs slow-cook the pork in a special barbecue sauce at their homes, then bring it to our tent to serve on fresh rolls. There was also a vegetarian version made with jackfruit this year. Then, at the end of the month, our chefs were back at it again. This time they tried something different: home-cooked chili and rice dished out as part of the Experience Volcano weekend event. We had five different kinds of chili ranging from vegetarian to all-beef (some say that's the only kind of chili!). They all must have been good because we sold out by early afternoon of the first day.

Why do we do it? First, because we know you're hungry, but more importantly, we use proceeds from the sales to support our annual scholarship programs for local kids heading to college. Just in case you're getting hungry, hang on. The chefs will be back at it in December when we host our annual Christmas cookie sale. Keep an eye out for us at the Sunday farmers market in the weeks before Christmas.

Submitted by Mike Leidemann



Members and friends of the Rotary Club of Volcano serve up their famous pulled pork sandwiches at the July 4th celebration.

VILLAGE PROPANE
MT VIEW
DELIVERIES AVAILABLE

18-1340 VOLCANO RD
MT VIEW VILLAGE
P.O. Box 711566
MT VIEW, HI 96771
(808) 640-6914

ROLAND G. IGNACIO
OWNER
MON - FRI 10:00 - 6:00
SAT - SUN 9:00 - 5:00
IF DOOR OPEN WE'RE OPEN

The Hawai'i Fireplace Advisor
In-home Consulting Since 1979

R. Jeffrey Mermel

call or text: 808-987-7748
Jeffrey.Volcano@gmail.com
PO Box 342
Volcano, HI 96785

BIG ISLAND FIREPLACE LLC

Wood & Gas Fireplace

Installation • Service • Repairs
Chimney Sweeps • Inspections
Trouble Shooting • Cleaning

Michael Donovan
bigislandfireplace@gmail.com
call or text (808) 491 1665

Kou Hale Realty LLC
"Love Hawaii"

SHERRIE GALDEIRA
Native of Hawaii and Lifelong Steward of Aloha!

Premier Homes HI REALTOR® RS-84308
PARALEGAL | MOBILE NOTARY PUBLIC | CIVIL PROCESS SERVER

Office: 79-7404 Hawaii Belt Road, Kealahou, HI 96750
Mail: 475 Kinaole Street, Suite 102-421, Hilo, HI 96720

808-345-9641

premierhomeshawaii.com
sherrie@kouhalerealty.com
@premierhomeshirealtor

**COOPER CENTER
THRIFT
& BOOK
STORE**

**EVERY
3RD SATURDAY
EVERYTHING
IS HALF PRICE
CHECK IT OUT!**

**We Will Beat ANY
Fireplace or Stove
Price in Hawaii***

**Hawaii
Fireplaces**

Hawaii's Only Full-Service Fireplace Store

64-1035 Mamalahoe Highway, Unit E
Kamuela - Uliani Plaza next to HPM
contact@hawaii-fireplaces.com
www.hawaii-fireplaces.com

887-0022 Division of Hawaii Air Conditioning

Installation • Restoration • Dehumidification • Service • Chimney Sweep

*Special offers apply to select qualifying equipment. Call for complete details.



Friends of Hawai'i Volcanoes National Park Hawai'i Volcanoes Institute Presents

SUNDAY WALK IN THE PARK – PU'ULOLO PETROGLYPHS
Saturday, September 10, 2023 - 10:00 am to 12:00 pm

This monthly program on second Sundays is aimed at bringing together the members of the Friends of Hawai'i Volcanoes National Park to explore the park's beautiful trails. This month we will explore the Pu'uloa Petroglyphs. Participants will meet at the trailhead.

Walk in the footsteps of the kūpuna (elders) to Pu'uloa (hill of long life), a sacred and awe-inspiring gallery of ki'i pohaku (images carved in stone). These simple etchings document the life and culture of the native Hawaiian people and spiritually, cradle the piko (umbilical cord) of their children. It brought hopes of receiving the blessings of a long and prosperous life.

Of interest: This coastal trail traverses a 500-550 year old lava field to one of Hawai'i's most extensive petroglyph fields. A site that has approximately 23,000 petroglyphs, many viewable at a boardwalk constructed for this purpose.

This event is presented by the Friends of Hawai'i Volcanoes National Park, a 501(c)(3) non-profit organization. Program cost is \$5.00 for Friends members. Non-members are welcome to join the Friends in order to attend. And, of course, additional donations are always accepted. Park entrance fees apply.

The petroglyphs are very fragile. Stay on the boardwalk.

Please check <https://www.fhvn.org/events/sw-20230910/> for updates and for more information about this event.

Friends of Hawai'i Volcanoes National Park is an official philanthropic partner of Hawai'i Volcanoes National Park – We are a non-profit 501(c)3
PO Box 653, Volcano HI 96785 - (808) 985-7373 - email: admin@fhvn.org - Web: www.fhvn.org - Find us on Facebook at www.facebook.com/fhvn

Small jobs - no problem

Semi - Retired Tree man

Der Oskar Tree Service LLC

OSKAR RIGGLE (808) 985-9225

Kupuna Rates



BODYWISE Body Tools
Massage Therapy in Volcano

Pain Relief

Call for appointment

Rebecca Gonzalez, RN, LMT

Office: 808-333-5913

Cell: 808-640-7656

Over 20 years experience

MAT#2224

Jen's Carpet Cleaning

Non-toxic removal of:

- Allergens
- Odors
- Stains
- Dirt

For:

- Upholstery
- Carpets
- Rugs
- Stairs

Free Estimates
808-464-2015

jenscarpetcleaning.com
jenscarpetcleaning@gmail.com

Aloha Folks... Volcanogites & Wanna-Be's Alike!


Fall on in to September's Volcano Swap/Craft/Art Meets. Held 2nd & 4th Saturdays, September 9th & 23rd from 8AM to 12Noonish at Cooper Center on Wright Road, in the Magical Heart of Volcano Village.

SHOP LOCAL! Featuring live music, local items & wares, onolicious food, & a great reason to shop till you drop.


There's ALL KINE STUFFS... Gently Used Plus NEW Treasures. Expect Local Handcrafted Swimwear, Jewelry, Quilts, Koa & Furniture, Produce & Plants, Art & Crafts, Clothing & Incense, Gifts & Decor, Tools & Gadgets, Jam & Honey, Pet Treats & Items, Cakes & Snacks, Collectibles, Antiques, Gemstones & Crystals. Thrift Store & Bookstore also open.

New vendors coming in regularly as waiting list allows. Like 1 space to sell your goodies, or need more info? Call Auntie Frances at 808-985-8646 & leave name, number, & message.



Have a Safe & Happy Labor Day Weekend! 



Hau'oli La Hanau 'O Queen Lili'uokalani! 

(Happy Birthday Queen Lili'uokalani!)

A Hui Hou,

Auntie Frances Roberts-Bennett 



THE VOICE

NEWS FROM THE VOLCANO COMMUNITY ASSOCIATION

20
23

SEPTEMBER

VOLCANO FARMS: Food Is Life!

SPOTLIGHT ON HI FIVE FARMS

Volcano residents Billie Martines and her husband Lawaia got into farming because they wanted access to healthier food for their growing family. It all started when Billie, who confesses she never thought she had a green thumb, started growing microgreens on her windowsill in January 2022. Billie's affinity for farming rapidly snowballed, and less than two years later, she is running her own farm and providing food to the Volcano community and the Big Island.

With the simple and direct mission of "Bringing you the goodness of nature," HI Five Farms officially began in April 2022, and has been full steam ahead ever since! The farm specializes in fresh, organic, non-GMO produce, with a focus on microgreens and a range of culinary mushrooms.

A unique service that everyone should know about, **HI Five Farms offers delivery of organic produce direct to the residents of Volcano.** Order from their website and await your delivery. Deliveries are also available in Hilo, Puna, Ka'u, and Kona. Please see website for details.

HI Five Farms sells wholesale to local restaurants, including Ohelo Cafe and Cafe Ono. You can also find them at the Volcano Sunday

DIY Microgreen Grow Kit

Market and Hilo Coffee Mill market in Mountain View, and at special events, like the Volcano Community Association's own 1st Annual Earth Day celebration!

To make all this happen is a labor of love for the whole family. Billie works closely with her adult daughter Lilo, who coordinates orders and deliveries, and Lilo's boyfriend, Blake, who manages microgreens.

HI Five offers specialty microgreens, including a DIY Microgreen Grow Kit, which gives the would-be grower "everything you need to grow your first tray of Sunflower Microgreens." Billie loves to take these into schools and teach the core principles of food sustainability to students.

And let's not forget the mushrooms! HI Five grows a wide range of beautiful mushrooms, including King Oyster, Shiitake and more!



King Oyster Mushrooms

HI Five is a new powerhouse Volcano family farm that we are very lucky to have here in our community. Their future plans include expanded produce offerings, acquiring a food truck to offer the community their own traveling "farm-to-fork" restaurant and sharing their extensive greenhouse space as a farm cooperative. They even have sites on someday opening a farm store and brewing some Volcano beer! In any case, Billie Martines has her eyes on a growing future.

HI Five Farms
(808) 987-6992
www.hifivefarmsllc.com
hifivefarmsllc@gmail.com

VOLCANO FARMS: Food Is Life!

SPOTLIGHT ON MCCALL FARMS

McCall's is a well-known name in the Volcano Village—and for good reason. For the past 10 years the McCall family, Jeff, Claudia, and son, Gary, have been supplying locally grown produce from their farm, located on Haunani in Volcano Village. The McCalls have become one of the greatest contributors of fresh, local produce to the community, with over 75% of their products never leaving the Volcano area.

As many of us know, continuous and abundant food production in Volcano is no easy feat. The combination of challenging dynamics we have in climate and conditions make growing food difficult. In spite of the challenges, the McCalls have shown the community that it is possible.

Jeff explains his trick for consistently beautiful crops: "Greenhouses are a must." McCall's farm has 13 hoop houses, which keep the rains from over-watering the crops.

When asked what is best to grow in Volcano, he responded that a good rule of thumb is to stick to the "cool-loving" leafy greens, like select brassicas, berries, and even the more challenging zucchini and cucumbers.

Even so, you can't always be certain how plants will perform. There is a fair amount of trial and error, and testing to see what sticks. For example, when Jeff was first establishing the farm in Volcano, he set up nearly two full greenhouses of strawberries. To his surprise, he found it terribly challenging to keep up with pest maintenance and disease control throughout the season. In the end, he realized that it was much easier doing two smaller, 30-foot beds outside.

Ultimately, being flexible and responding to challenges as they come up has been the key to McCall Farms' successful growing operations in Volcano. McCall offers an abundant array of vegetables and farm made products.

I would like to personally thank the McCalls for their commitment and contribution to the Volcano community. Mahalo nui loa.

McCall Farms

**19 Haunani Road, Volcano
(808) 937-1056**

**Every Sunday - Volcano
Farmer's Market, 6-10am**

**Every Wednesday - Haunani
Farm Stand, 3pm**

*Feel free to call or text orders
for pickup*

WORKSHOP: Worm Composting

VCA is excited to announce its first educational workshop on Worm Composting!

This event is intended to stimulate the self-sufficiency and sustainability of our community by putting real knowhow right in your hands. In this workshop, participants will learn the basics of how to successfully set up and maintain a worm bin for recycling food scraps, as well as how to best make use of the rich organic matter it produces.

Location:

Copper Center Pavilion

Date: Saturday, September 23,
2023

1:30 - 3:30/pau

Admission:

\$10 for VCA Members

*For this first event of what
we hope to be a series, if
you purchase or renew a
VCA membership at arrival,
admission is free!*

We hope to see you all there!

Pā Ka Leo: The Voice of Our Community is Our Community of Voices!

The Volcano Community Association represents Volcano Village, Volcano Farm Lots, Cymbidium Acres, Mauna Loa Estates, Ohia Estates, Volcano Golf Course, Royal Hawaiian Estates and Hawai'iian Orchid Isle Estates.

"The Voice" is published by the VCA Board of Directors: Scott Fossel, James Morgan, James Sutton, Mahi Snell, Sherrie Galdeira, Daniel Morimoto and Ida May Gager. We always want to hear from you! Questions? Comments? Feedback? Concerns? Call, text or email Scott directly at scott.fossel@gmail.com or 510-414-4478.



VOLCANOCOMMUNITY.ORG

VOLCANOCOMMUNITYASSOC_HAWAII

@VOLCANOCOMMUNITYASSOC

PO BOX 600, VOLCANO, HI 96785 | VOLCANOCOMMUNITYASSOCIATION@GMAIL.COM



Volcano School of Arts and Sciences September 2023 News

Volcano School Welcomes Seniors for the First Time

Volcano School now goes to 12th grade. After many years of dreaming for a high school, Volcano School began serving 9th and 10th graders in 2020, adding grade 11 in 2022, and now grade 12 in 2023.

The first week of high school was dedicated to building *kaiāulu* (community) with a focus on *pilina* (relationships). Freshmen and new students returned on August 7th for our orientation with our *kumu* (teachers) and a few of our current students as *alaka'i* (leaders). On the 8th, all high school students engaged in team building exercises and activities to *mālama* (care for) and share ownership of their learning space.

Throughout the week, students built benches, put up bulletin boards, decorated classrooms, trimmed back encroaching ginger and other invasive plants, and a trip to Wai'uli in Keaukaha. On the last day, students collaborated to identify problems and challenges in the communities where they live and presented their ideas to the rest of the high school students. It was one of the best first week back according to many of our students.

This year, Volcano School staff, students, and Governing Board directors will be working to deepen and clarify our place-based mission: Learning through Volcano's unique natural and cultural resources to become creative global citizens. This year's theme, 'O Kīlauea ka Ipukukui: Kīlauea is the lighthouse, and explorations of *mo'olelo* (stories) of Kīlauea will guide this work.

Kūlia, 'Ohana, and Aloha at Volcano School

Kūlia, 'Ohana, and Aloha, or KOA are the core values of the Volcano School. **Kūlia:** We value striving. With a growth mindset, we focus on the work and fulfilling our *kuleana* (responsibility and privilege) to our best ability. We value hard work, high expectations, ownership of learning, and shared accountability. Throughout the year, students set goals and monitor their progress. At the end of the year, students present a portfolio to their parents to show evidence of their growth and learning.

'Ohana: At VSAS, we recognize the importance of 'ohana. We realize that our *haumāna* have greater success when the school works in partnership with 'ohana and community. At school, we maintain an environment that reflects the values of 'ohana. It matters at VSAS that everyone feels included and welcomed and this is evident in how students learn, play, and socialize together.

Aloha: Me ke aloha. If it can't be said or done with aloha, it shouldn't be said or done at our school. Aloha is why we come to school, why we teach, why we learn. Our staff and students are supportive, caring, and compassionate towards each other, the land, and all beings.

KOA: Bravery, strength, courage. With *kūlia*, 'ohana, and aloha, we learn, grow strong, and support each other to meet every challenge.

To enroll in the Volcano School of Arts & Sciences, download an enrollment

application on www.volcanoschool.net or call 808-985-9800.

Volcano School is seeking an After School Club Program Administrator to provide after school activities for students ages 3-15. Pay is dependent on experience and qualifications. Start date is as soon as possible. To apply, send resume to apply@volcanoschool.net and include the position you are applying for in the subject line.



Hawai'i Volcanoes National Park September 2023

HAWAII NATIONAL PARK, Hawai'i – Let Hawai'i Volcanoes National Park September events fall into your autumn plans with After Dark in the Park presentations, a poi making demonstration, guided hikes, a coffee talk and more!.



All events are free, but entrance fees may apply. Some programs are sponsored by Friends of Hawai'i Volcanoes National Park and Hawai'i Pacific Parks Association. Programs are subject to change or cancellation without notice. Check the park calendar for more information.

Invasive Wildlife of the Pacific Islands. The terrestrial biota of the Central Pacific is primarily defined by its degree of isolation. At the center are the Hawaiian Islands, almost 4,000 km (2,480 miles) from the closest continental land mass. Millions of years of evolutionary isolation created beautiful and unique native ecosystems. However, the Central Pacific islands were suddenly besieged by alien rodents, carnivores, ungulates, reptiles and diseases. Dr. Steven Hess, research biologist with the U.S. Dept. of Agriculture, reveals how reversing the devastating effects of alien species has proven to be difficult, but limited successes have resulted in the dramatic recovery of native species. Part of Hawai'i Volcanoes' ongoing After Dark in the Park programs and co-sponsored by the Friends of Hawai'i Volcanoes National Park. Free, but park entrance fees apply. **When:** Tuesday, September 12 at 7 p.m. **Where:** Kīlauea Visitor Center auditorium

Make Poi the Traditional Way. Come learn how Hawaiians make poi from the root of the kalo plant. The root is cooked and ku'i (pounded) to create this classic and important Hawaiian dish. Ranger Keoni will share his knowledge of ku'i kalo and 'ohana (family) connections to Waipi'o Valley, where kalo thrives and is farmed by local families. Part of Hawai'i Volcanoes National Park's ongoing 'Ike Hana No'eau (Experience the Skillful Work) Hawaiian cultural programs, and co-sponsored by Hawai'i Pacific Parks Association and the Friends of Hawai'i Volcanoes National Park. Free, but park entrance fees apply. **When:** Wednesday, September 13 from 10 a.m. to noon. **Where:** 'Ōhi'a Wing (across Crater Rim Drive from Kīlauea Visitor Center)

Coffee Talk: The Nature Conservancy on Hawai'i Island. Based in Nā'ālehu, Shalan Crysdale is the Hawai'i Island Forest Program Director for the Conservancy. He oversees forest program operations, including stewardship of three preserves and two conservation easements across the island. He and his team of four protect 10,000 acres along the southwest flank of Mauna Loa, including the Kaiholena Preserve in Ka'ū. **When:** Saturday September 16 from 9:30 a.m. to 11 a.m. **Where:** Kahuku Visitor Contact Station

The Search for Exoplanets: Earth Like Planets and Alien Worlds. Orbiting distant stars, myriad alien worlds have recently been discovered. Some of these exoplanets fall in the "goldilocks" or habitable zone. Some appear to have oceans of liquid water and favorable conditions for life. Could Earth 2.0 be orbiting a nearby star? Come learn about the hunt for planets around distant stars with Subaru Telescope astronomer Julien Lozi. Hear about the exoplanet revolution and what this means for the field of astronomy and how Hawai'i may be the perfect place for future discoveries. Part of Hawai'i Volcanoes' ongoing After Dark in the Park programs and co-sponsored by the Friends of Hawai'i Volcanoes National Park. Free, but park entrance fees apply. **When:** Tuesday, September 19 at 7 p.m. **Where:** Kīlauea Visitor Center auditorium



Milky Way galaxy shines bright with a building lit within below. Learn about the search for exoplanets and alien worlds at After Dark in the Park on September 19, 2023. NPS Photo/J.Weir

Stewardship at the Summit Rainforest Restoration. Volunteer to help remove invasive, non-native plant species that prevent native plants from growing in Hawai'i Volcanoes National Park. Wear sturdy hiking shoes and long pants. Bring a hat, rain gear, day pack, snacks and water. Gloves and tools are provided. Under 18? Parental or guardian accompaniment with written consent is required. Visit the park website for details. **When:** September 1, 9, 15 & 22. Meet at 8:45 a.m. **Where:** Meet project leaders Paul and Jane Field at Kīlauea Visitor Center on any of the above dates.

Stewardship of Kīpukapuauulu. Help remove troublesome plants at Kīpukapuauulu, home to diverse native forest and understory plants. Bring clippers or pruners, sturdy gloves, a hat, and water. Wear closed-toe shoes and clothing that you don't mind getting permanently stained from morning glory sap. Be prepared for cool and wet or hot and sunny weather. New volunteer? Contact Marilyn Nicholson for more info: nickem@hawaii.nps.gov. **When:** Every Thursday at 9:30 a.m. **Where:** Meet at the Kīpukapuauulu parking lot, Mauna Loa Road, off Highway 11 in the park.

Connect Virtually. Visit the park website at www.nps.gov/HawaiiVolcanoes or follow us on Instagram and Facebook at @HawaiiVolcanoesNPS. Share your park experiences and use #HawaiiVolcanoesNP and #MyParkStory.

Kapāpala Ranch Tour

The Volcano Community Foundation will offer an exclusive tour of Kapāpala Ranch on Saturday September 23rd. Excursions of the private ranch are seldom offered and this outing will give participants a chance to experience scenic 4-wheel drive pathways and pastures of the 29,000-acre working Hawaiian ranch. Manager Lani Cran Petrie will be our guide and will discuss their ranching innovations, changes that came with the Great Mahele, and sugar plantation days of Ka'ū. Highlights will include a visit to the State Forest Reserves, the site of Ka'ū's first public school, and an old charcoal oven.

Check-in for the tour will be at 9:30am at the ranch, and the tour will conclude with a delicious catered lunch outside the historic Ranch House. Fee for the tour and lunch is \$85 per person. Advance registration and payment are required due to the limited number of spots available. To reserve your space, email volcanocommunity@gmail.com or call (808) 895-1011. Registration confirmation and additional details will be emailed to you prior to the tour.

Please note that a 4-wheel drive vehicle is required. We

FRIENDS OF HAKALAU FOREST

NATIONAL WILDLIFE REFUGE





WALK FOR THE WILD

JOIN US!



"I'iwi on 'Akala" by Jack Jeffrey

Saturday, October 14, 2023

9.00 am / 3.00 pm

Pua Akala, Hakalau Forest NWR

5 km Walk

- Experience 38 years of successful conservation restoration
- Meet knowledgeable guides
- View Informative exhibits



Hakalau Forest NWR was created in 1985 to protect and manage endangered forest birds and their rainforest habitat. The Friends of Hakalau Forest NWR was established in 2006 to partner with the refuge in helping preserve native Hawaiian forest ecosystems.

Register & / OR Donate

CLICK [HERE](#) OR SCAN



Need

Your own 4WD transportation

Bring

- Rain gear
- 2 qts. water
- Lunch
- Sturdy shoes

No pets



Directions

Meet at the Pua Akala gate

- Turn right off Maunakea Access Rd on UNPAVED Keanakolu Rd (aka Mana Rd)
- Continue for 10.5 miles to the Pua Akala gate

Look for our signs




Requirements

Help us protect the Refuge from alien species:

1. Inspect & clean all gear and equipment: especially important for interisland participants
2. Clean all vehicles: seats, floor mats, tires, wheel wells and vehicle undercarriages
3. Pack out your trash: (including organic trash such as apple cores etc.) and uneaten food
4. Prevent rapid ohia death (ROD): spray bottles with 70% rubbing alcohol will be provided to spray your footwear, before you start the walk, in order to kill ROD spores

And... an adventurous attitude. **Weather may be cold/wet !**

www.friendsofhakalauforest.org

A nonprofit devoted to conserving the unique flora and fauna of Hawai'i Island

friendsofhakalauforest@gmail.com



"Happy Face Spider" by Jack Jeffrey

may be able to accomodate a limited number of individuals who do not have their own 4WD, but cannot guarantee that at the present time. We highly recommend securing your own transportation.

Submitted by Volcano Community Foundation

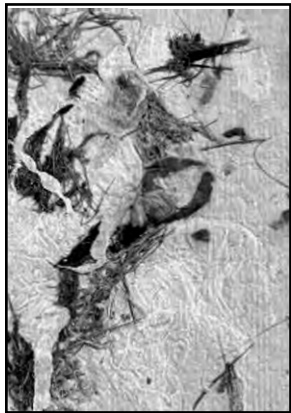


Exhibition: Hawai'i Nei Invitational continues through October 1st, featuring **Kathy Sprinkle, Carol Treadway, Robert Peck, Saxony Charlot, Alesya Ray Kaha, Janee Weddell- Hespeneide, Aly Kat, Jillian Marohnic, and Dawn Sagar** at VAC Gallery in Hawai'i Volcanoes National Park

Exhibition: Changing Oceans: Changing Minds Installation by **George Nuku** continues through September 10th at Volcano Art Center's Nialani Campus in Volcano Village (19-4074 Old Volcano Road).

Exhibition: Walking Through Mist: Metaphors and Memories The Volcano Art Center (VAC) proudly announces a solo exhibition by **Phan Nguyen Barker** titled Walking Through Mist – Metaphors and Memories, opening Saturday, September 16th, and continuing through Sunday, October 8th at Volcano Art Center's Nialani Campus (19-4074 Old Volcano Rd.) in Volcano Village. The public is invited to meet the artist at the opening reception on Saturday, September 16th, from 2 - 4 pm.

Home Herbalist Body Care 2 workshop with **Heather Penfield** on Saturday, September 16th, from 9am – 11am., at Volcano Art Center Nialani Campus. Call (808) 967-8222 to register or visit www.volcanoartcenter.org.



Join artist **Mary Milezick** for a **Mixed Media Papermaking** workshop on Saturday, September 16th, 2023, from 10 am – 2:30 pm at Volcano Art Center Nialani Campus. Newcomers and advanced students are welcome. \$70/\$65 (VAC member), plus a \$45 supply fee. Call (808) 967-8222 to register or visit www.volcanoartcenter.org



Volcano Art Center's Hula Arts at Kilauea performance series continues Saturday, September 9th with a presentation featuring Kumu Hula Paul Neves with hālau Ha'a O Kinohi. The performance begins at 10:30am in Hawai'i Volcanoes National Park. Although the performance is free, National Park entrance fees apply.

The Volcano Art Center is a non-profit educational organization created in 1974 to promote, develop, and perpetuate the artistic and cultural heritage of Hawai'i's people and environment through activities in the visual, literary, and performing arts.

OKTOBERFEST



*** **FRIDAY** ***
OCTOBER 6, 2023

Volcano Grown Produce!!



LETTUCE, SPINACH, STRAWBERRIES
OTHER VEGES & JAMS
Sundays 6-10am at Cooper Center
Wednesdays 2-5pm at our farm stand
Or by appointment
McCall Flower Farm, Inc
19-4277 Haunani Road Volcano, Hawaii
Jeff 937-1056 or Landline 928-6456
mccallsfarmandstainedglass@hawaii.rr.com

VOLCANO TREE SERVICE



certified arborist/tree climber
specializing in difficult take-downs,
pruning and risk assessment
Call 808-365-4003 for a free estimate.
#WE-6522A Shawn Page

Volcano Maintenance and Repair



Mechanical Systems, Catchment and
Water Systems, Filters, Pumps, Water
Heaters, Faucets, Timers, General
Maintenance.
POB 2074
Volcano, Hi. 96785
808-315-5130
jeffreyirvin@gmail.com Jeff Irvin Lic. W44389348-01

Volcano Community News

Cooper Center Council

P.O. Box 1000 Volcano, HI 96785



Cooper Center
Wright Road

Non-Profit Org
U. S. Postage
Paid
Permit No. 12
Volcano, HI
96785

*****CART-RT SORT **WSS POB

RESIDENT
P.O. BOXHOLDER
VOLCANO, HI 96785



VOLCANO ART CENTER

WHERE PEOPLE, ART AND NATURE MEET

SEPTEMBER EVENTS

Exhibit: *Hawai'i Nei Invitational*
continues through October 1st featuring the works
of Kathy Sprinkle, Robert Peck, Saxony Charlot,
Aleysla Ray Kaha, Janee Weddell- Hesperheide,
Aly Kat, Jillian Marohnic, and Dawn Sagar,
at VAC gallery in HVNP

NIAULANI EXHIBITS

Walking Through Mist
featuring Phan Barker
September 16th - October 8th
Changing Oceans: Changing Minds
Installation by George Nuku
continues through September 10th

September 16 -- *Home Herbalist*
Body Care 2 with Heather Penfield
September 16-- *Mixed Media*

Papermaking with Mary Milelcik
September 9 - Hula Kahiko: Featuring Kumu Hula
Paul Neves with hālau Ha'a O Kīnohi
at 10:30 am in HVNP near VAC gallery

Office: (808) 967-8222
Gallery in HVNP: (808) 967-7565
volcanoartcenter.org



15% KAMA'AINA DISCOUNT

*PLEASE MENTION THIS AD TO RECEIVE DISCOUNT

JOIN US DAILY FOR
BREAKFAST, LUNCH, PAU HANA & DINNER

kilauealodge.com | 808.967.7366
19-3948 Old Volcano Rd, Volcano Village, HI

VOLCANO EVENING
MARKET
EVERY THURSDAY
3:00 PM to 6:00 PM

foodie delights
music
crafts
produce



corcoran

PACIFIC PROPERTIES

Luxury Service with Aloha Spirit

Ronald A. Rigg RB-15044
808-936-1962 ron@ronrigg.com
Resident "Volcano Realtor" since 1986

"Live Volcano"
Bordering HVNP
Two homes on .785 ac.
\$849.785.

Anela Scott
Pueo Healing Massage

Mana Lomi® Lomi ili'ili (Hot Stone)
(808) 300 6591
anela.scott@posteo.us
www.pueo-healing.abmp.com

NEW: FOREST MESSAGES
Get a massage in a cozy gazebo,
surrounded by tranquil rainforest.

LMT 15159, Volcano, HI 96785
Member Associated Bodywork
& Massage Professionals

